

# \* \* PRESS RELEASE \* \*

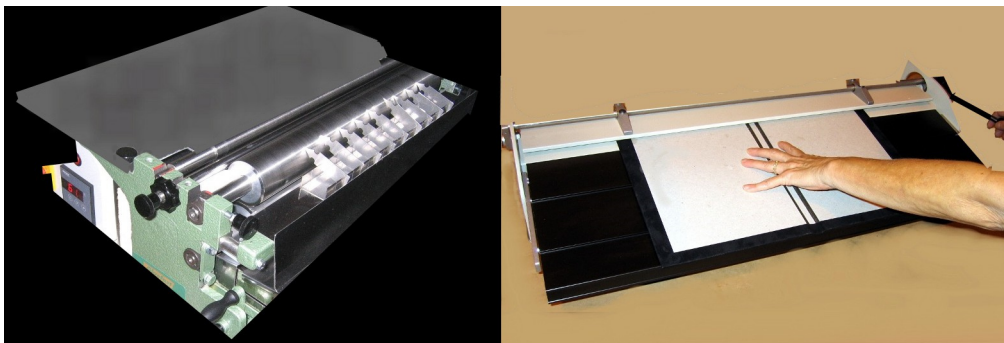


## For Immediate Release

Date: November 10, 2011

Contact: Lester Mallet Phone: 732-918-4600, ext. 10 E-mail: [lmallet@gluefast.com](mailto:lmallet@gluefast.com)

## GLUEFAST INTRODUCES CASE MAKING SYSTEM



The Gluefast Company offers a system that includes three simple machines:

1. A **glue machine** applies glue onto a book cover (model Colonel-AG shown above left). Gluefast offers several models that apply cold glue or hot protein glue.
2. The glued cover is placed into the Alignment Table which guides the operator when placing the binder board onto the cover.
3. The cover is then placed into an Edge Turner (shown above right) which turns in the edges to complete the creation of the hard cover.

The entire process takes just over a minute for most operators. A video of the process can be seen at [www.gluefast.com/videos.html](http://www.gluefast.com/videos.html).

The Gluefast Company has manufactured gluing equipment and adhesives for the packaging, converting, and graphics industries for 70 years! Gluefast can be found on the web at [www.gluefast.com](http://www.gluefast.com).

For further information please contact Lester Mallet by phone or e-mail: [lmallet@gluefast.com](mailto:lmallet@gluefast.com). We would be happy to provide you with the above photo for your needs.