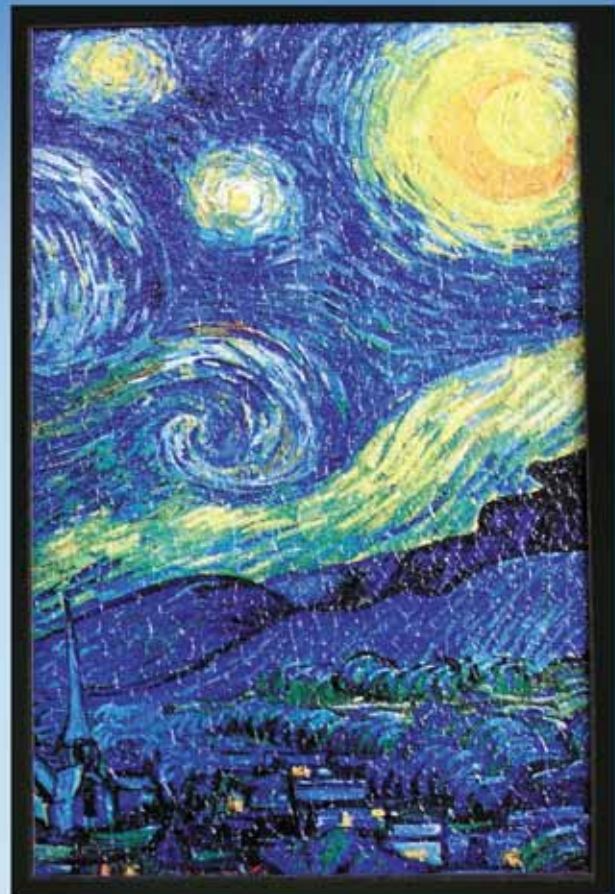


CRAQUELURE TEXTURE COATING

*Acid-free, water
based acrylic
polymer coating*



***Makes posters
look like they
were painted!***



One of the 7 ways Gluefast helps you
mount, mat, and frame posters



MOUNTINGPOSTERS.COM

Craquelure Texture Coating

is a acid-free, water based acrylic polymer coating. It comes in three versions:

- CR 401 – Matte Finish
- CR 502 – Semi-Gloss
- CR 603 – Hi Gloss

This product is a value-added coating It is applied on top of a 4-color mounted lithographed print, poster or photograph. If in doubt, test a small amount on the print.

The look of the finished product can be varied, ranging from a paint-brush-look to a canvas-type appearance. Drying time ranges from a few minutes to an hour, depending on the amount applied.

This product can be applied with:

- Paint Brush - the operator can completely control the look of this effect.
- Paint Roller - provides a textured look. For added texture, apply more product with a 1/2" or higher nap roller. (Some customers use a paint roller to apply the matte finish, then apply the semi-gloss or hi-gloss finish with a paint brush to provide highlights.)
- Using a smooth foam roller (non absorbing) can apply lines of acrylic onto the print. The coating is applied in one direction and allowed to dry. A second cote is applied - turning the print 90 degrees - providing a linen/canvas-type look.



Using the paint roller method, you can expect a yield of 256 square feet per gallon.
Using the smooth foam roller method, you can expect a yield of 608 square feet per gallon.

Available in quarts, gallons, 5-gallon pails, and 55-gallon drums.